

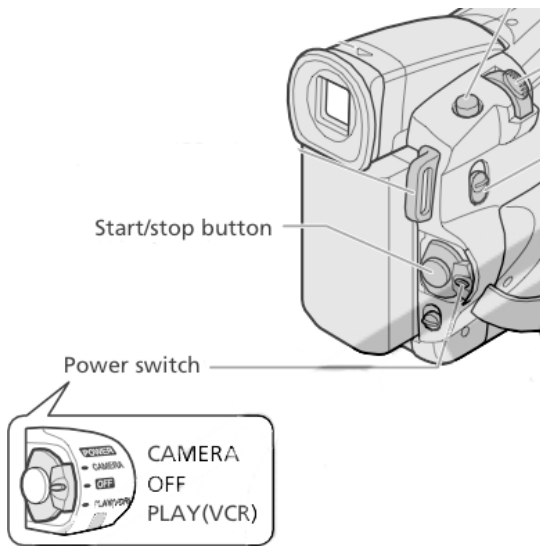
Using DV Video Cameras

Josh Burkner | josh_burkner@misd.wednet.edu
February 2005 | Updated May 2005

You can use the DV video camera in conjunction with your Mac and iMovie to create movies. While a number of different models of DV video cameras exist in the school district, they all work more or less the same way. This document will provide an introduction to the use of the camera and illustrate how to connect the camera to a Mac and download the footage to the Mac's hard drive for use with iMovie.

Using the Camera

The power switch on the camera controls whether it is operating as a camera or as a VCR to play back footage that you have recorded to tape.



Depending upon which function you wish to use, you can turn the power switch to select **Camera** or **Play (VCR)**.

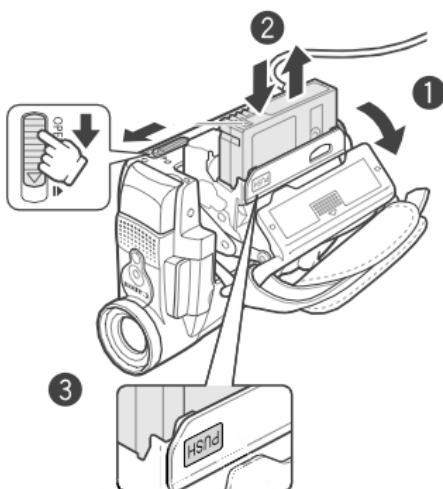
If you are filming, you will want to make sure that the power switch is set to **Camera**.

If you wish to watch your footage, set the power switch to **Play (VCR)**.

Additionally, the button in the middle of the power switch will both **Start** and **Stop** the camera from recording.

Make sure that the camera's power switch is set to the **OFF** position when you are not using the camera; this will preserve the battery.

You must load a DV video tape into the camera before you begin shooting your footage. Turn the video camera over so you are looking at the bottom of the unit.



Begin by sliding and holding the **OPEN/EJECT** switch and open the cassette compartment cover (1). The cassette compartment will automatically open.

Next, load the cassette. You want to load the cassette so it is "face up" (2).

Finally, press the **PUSH** mark on the cassette compartment until it clicks. The compartment will automatically retract and the tape will be loaded (3).

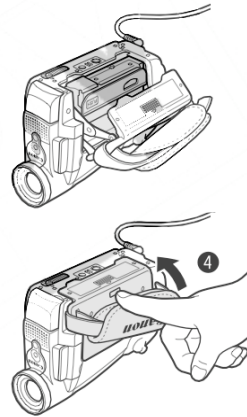
Never press the part of the cassette compartment that is explicitly marked "**Do Not Press This Part.**"

After the tape is drawn into the cassette compartment you can close the cassette compartment cover (4).

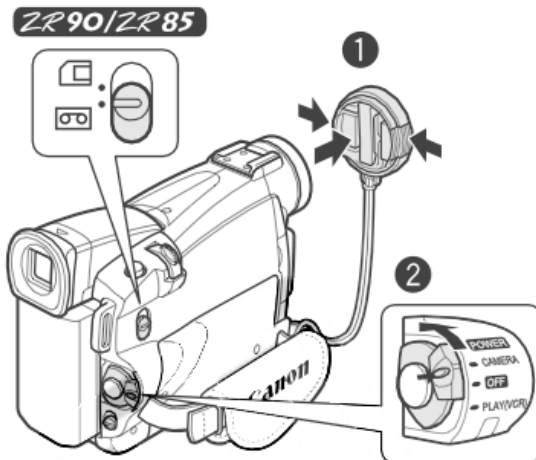
Make sure the latch catches.

The camera does not need to be powered on to load and unload a video tape; however, the battery must be holding a charge or the camera must be plugged into electricity for the tape loader to work.

Do not interfere with the cassette compartment as it opens or closes and do not attempt to close the cover before the cassette compartment has fully retracted.



With the tape loaded into the camera you are ready to begin shooting your footage.



Remove the lens cap from the camera (1).

Make sure that the **Tape/Card** switch is set to use a tape, as illustrated to the left. You should never set the camera to use the card.

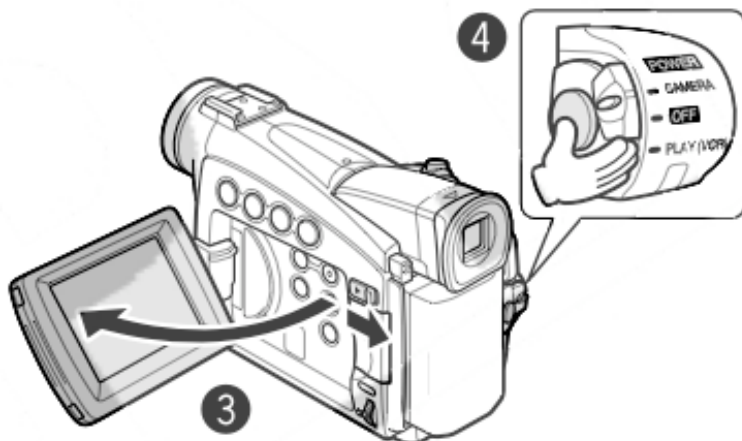
Set the power switch to **Camera** mode by moving it to the up position (2).

Push the **OPEN** button next to the LCD panel and open the LCD panel by moving it out and away from the camera body (3).

Finally, begin recording by pressing the **start/stop** button (4).

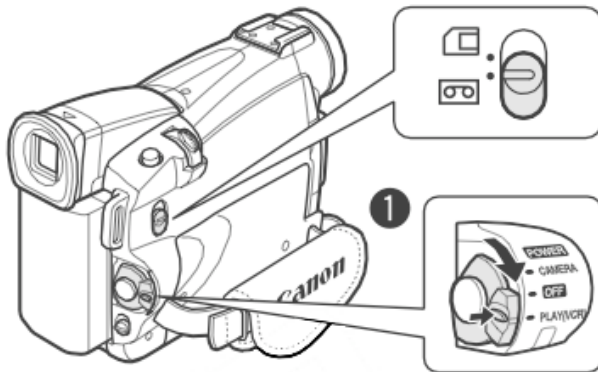
You can watch what you are filming through the eyepiece or on the LCD monitor.

Stop recording by pressing the **start/stop** switch again.



Once you have shot some footage you might wish to play it back to review what you have filmed.

Set the camera to **Play (VCR)** mode by moving the power switch to the appropriate position (1).



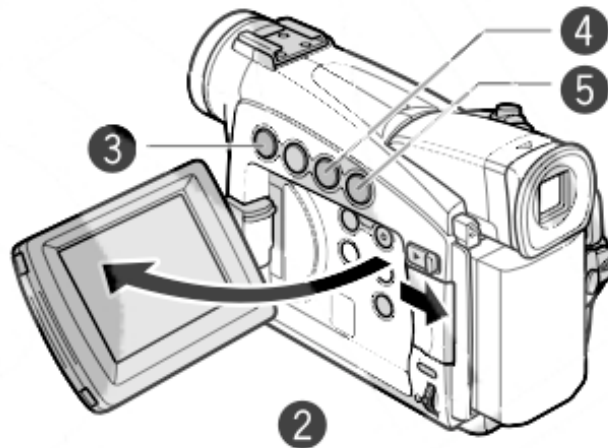
Additionally, make sure that the **Tape/Card** switch is set to use the tape, as shown to the left.

Push the **OPEN** button next to the LCD panel and open the LCD panel by moving it out and away from the camera body (2).

Press the << button to rewind the tape (3).

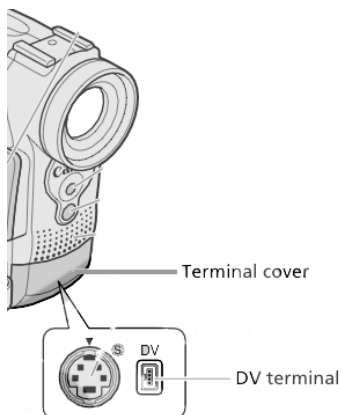
Press the > / || button to begin playback (4).

Press the ■ button to stop playback (5).



Importing Your Footage

Once you have completed shooting your footage you are ready to import your video to your Mac. Keep in mind that a minute of video footage takes about a gigabyte (GB) of hard drive space. Your iBook has a 30 GB drive, so you can see how quickly you could fill up a hard drive with video footage. Plan accordingly.



The front of the video camera has a **terminal cover** that conceals the **DV terminal** underneath it. Open the **terminal cover**, where you will see the **DV terminal** and perhaps an S-Video connector, as pictured to the left.

Plug the appropriate end of the **FireWire** cable that comes with the camera into the **DV terminal** on the camera.

Plug the other end of the **FireWire** cable into the appropriate port on the side of your iBook or a classroom iMac.



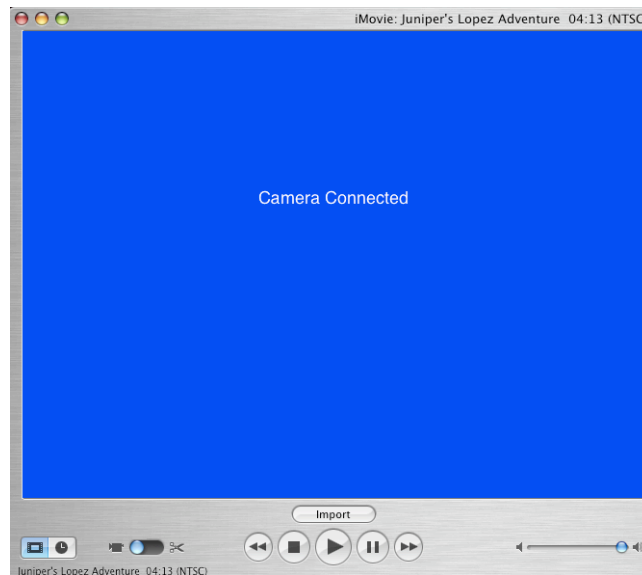
On your Mac open the iMovie application, which is found in the **Applications** folder on the hard drive.

If you do not have a project on which you are currently working, iMovie will prompt you to create a new project. Name the project and click the **Save** button. iMovie will then open with your empty project displayed.

Turn the power switch on the camera to **Play (VCR)**. Then, in iMovie, switch to **camera mode** by sliding the button to the appropriate mode.



iMovie will update the window to indicate that there is a camera connected.



The controls in iMovie can be used to control the camera. You can cue the tape by using the rewind and fast forward buttons in iMovie.

When you are ready to import your footage into iMovie, click the **Import** button. The camera will play its footage and iMovie will import the video into the clips bin.



Finishing Up

When you have finished importing your footage, turn off the camera by moving the power switch to the **OFF** position. You can then disconnect the **FireWire** cable from the **DV terminal** on the camera and from the **FireWire** port on your Mac. Eject your video tape from the camera. Put the lens cap back in place and recharge the camera's battery so that it is ready for the next user.