

# Using the T2524 Master Clock/Intercom Software

Josh Burkner | josh\_burker@misd.wednet.edu  
November 2003

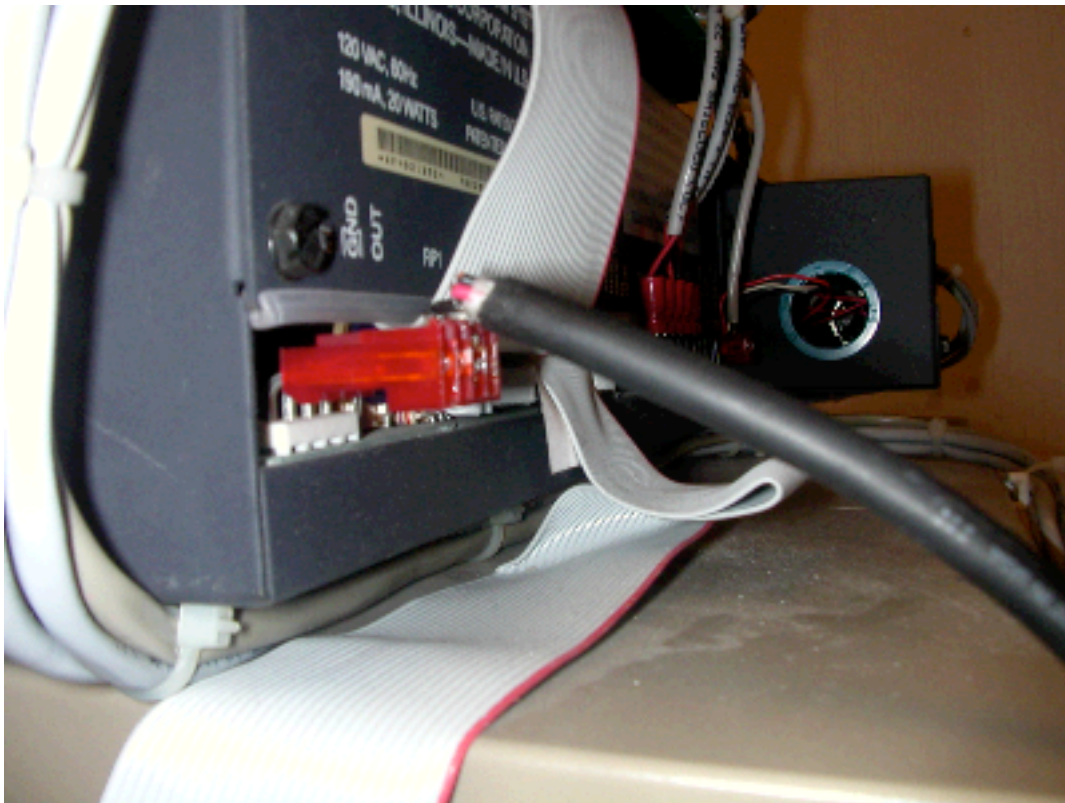
This document reviews how to login to the Rauland 2524 Master Clock and Intercom Controller using a PC-DOS application, which offers easier configuration of the bell schedule than programming it directly on the 2524.

There is a management cable available at Lakeridge Elementary. You will need this cable to connect a PC to the Rauland 2524.

The actual workings and configuration of the Rauland 2524 is beyond the scope of this document. Please refer to Rauland 2524 user manual for specific information about configuring Zones, Event schedules, and Holiday schedules.

## **Connecting to the Rauland 2524**

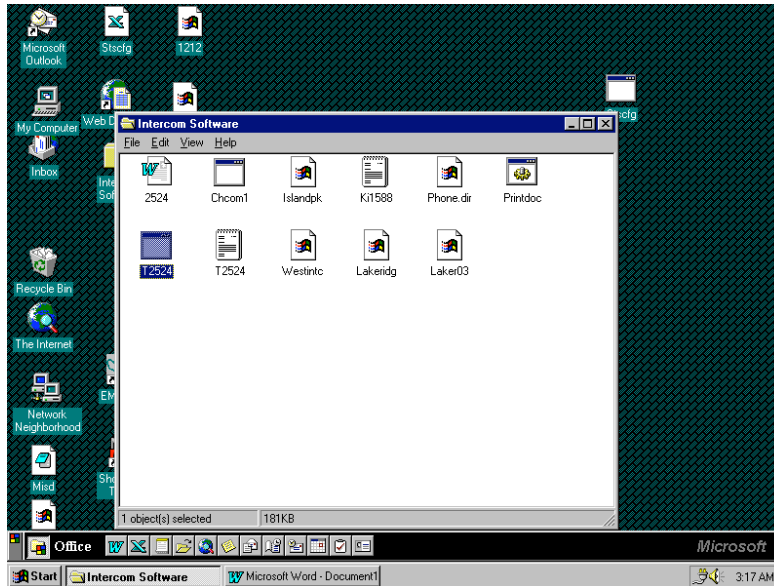
You can connect a PC to the Rauland 2524 using a special cable. The cable connects to a COMM port on the PC and to the back of the Rauland 2524. The cable should be oriented like shown below:



Make sure that the cable is "on top" of the connector and is connected to the COMM port on the PC.

## Using the Software to Configure the Rauland 2524

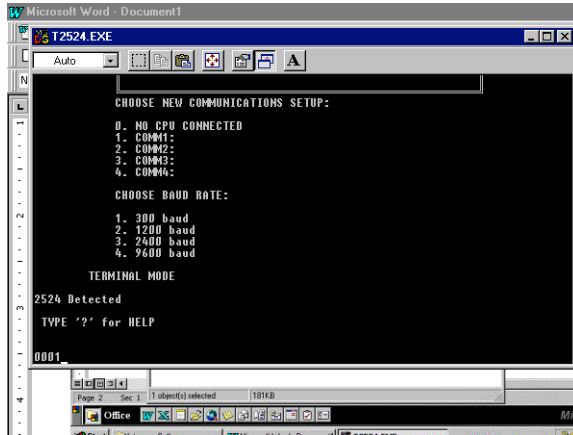
With the cable connected to the PC and to the Rauland 2524, boot the PC. You should then open the Intercom Software folder, which contains the **T2524** application; it is a PC-DOS executable.



Open the **T2524** application. You will be greeted with the following screen:

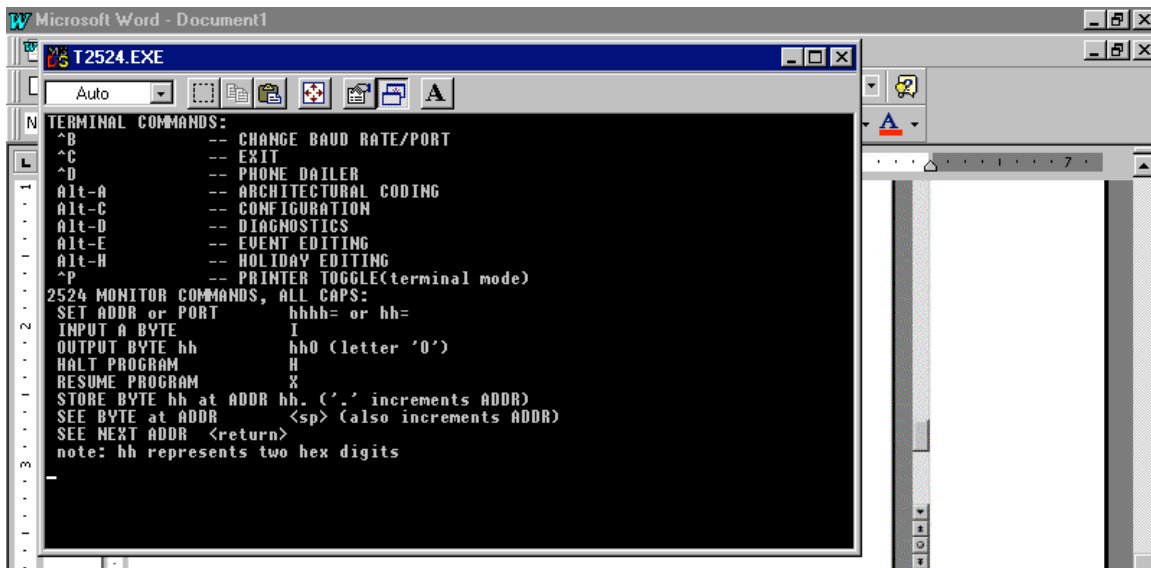


1. The first selection should be **1**, for COMM1 (shown above).



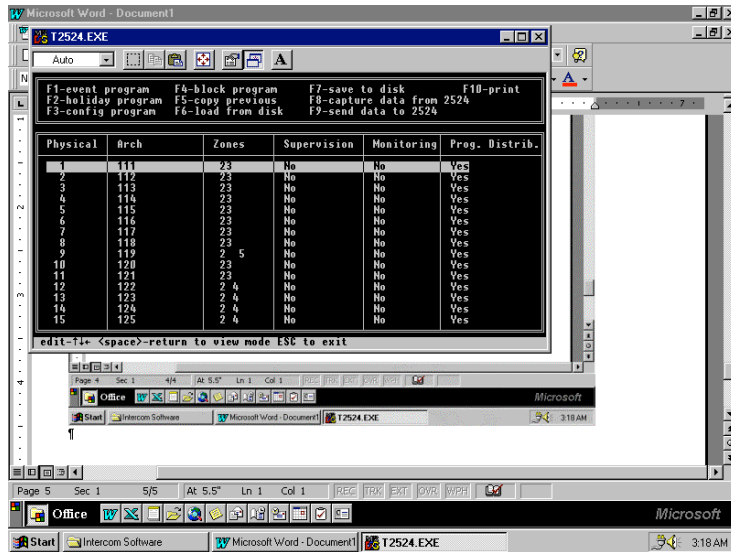
- The second selection should be **2**, for 1200 baud (shown above).

Once you have set those two communications setups configured you will be connected to the Rauland 2524. Type ? to get a list of all of the commands you can use, as shown below. The most commonly used commands are going to be **Alt-A**, which one uses to change the Zones in the school, and **Alt-E**, where one edits the bell schedules.



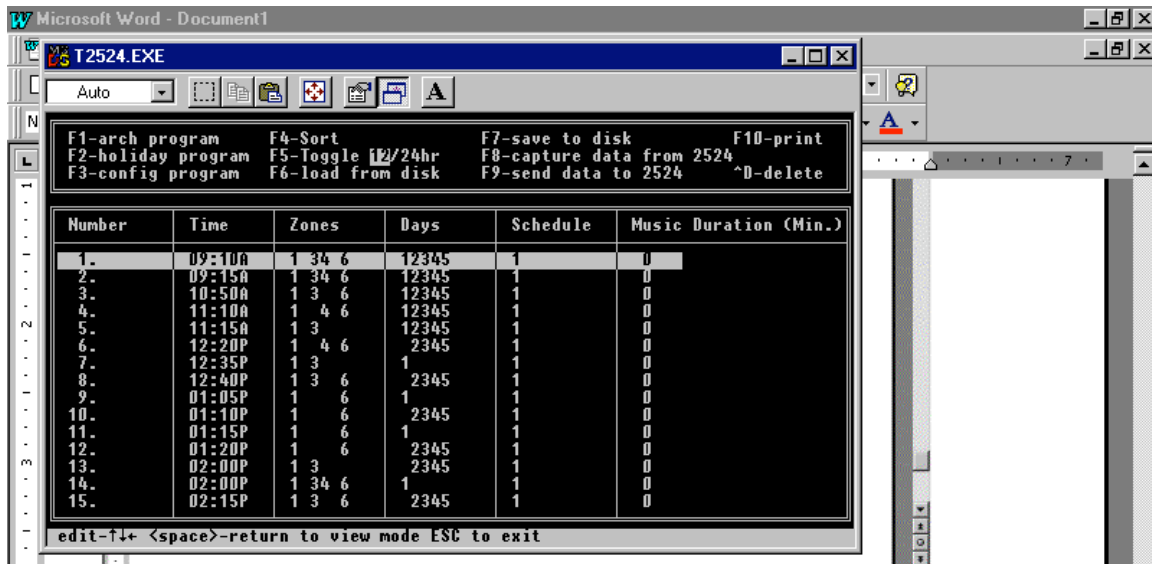
### Changing Zone Information

From the Help screen select Alt-A, **Architectural Coding**. This is where you can select to which Zone a particular room is assigned. Typically, one would not to change any of these settings.



## Changing Event Program

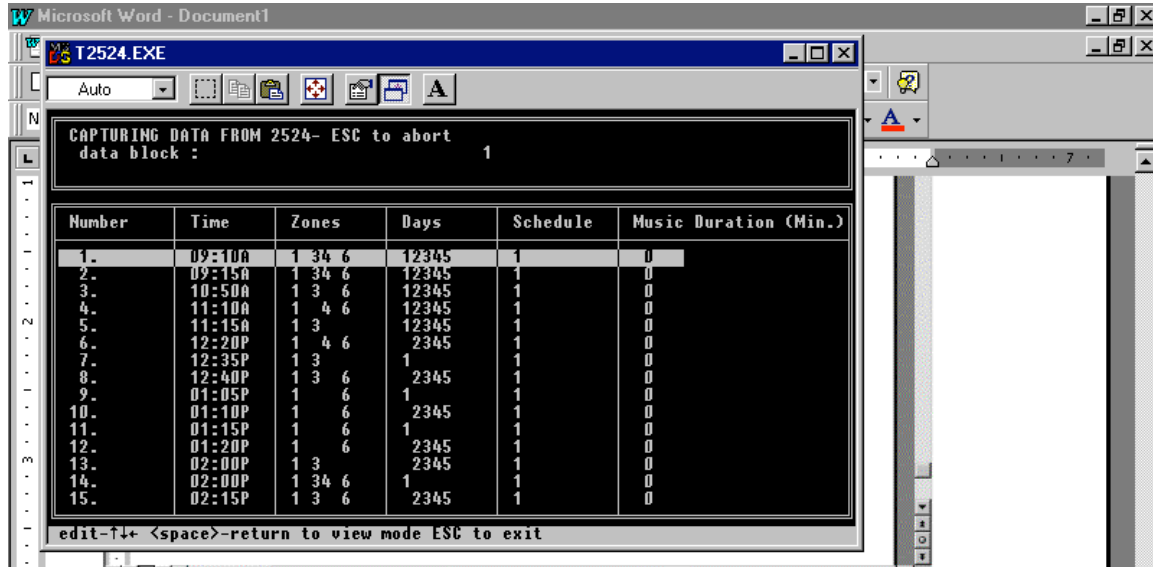
This is where the majority of configuration will be done as it relates to the bell schedule. You can reach this screen from the first login screen by typing **Alt-E**. Typically you will need to first use the **F4** sort option, and choose to sort by **Time**, so the schedule is laid out properly, as shown below:



From this screen one can easily see the bell schedule in its entirety and make changes as needed. In order to change the Zones in which the bells ring, for instance, one moves to the Zones column using the **right arrow** key and then types the number for the Zone that you wish to add or remove. In the highlighted example above, if one wanted to remove Zone 3 from the 9:10 a.m. bell, then one would type **3**, which would then remove 3 from the Zones for the 9:10 bell. Additionally, the **Days** on which the bell will ring can be set in an identical manner; simply type the number for the day one wants to add or remove. Note that the days are arranged Monday through Sunday, with Monday being **1** and Sunday being **7**.

## Backing up a Building Schedule

The software used to communicate with the Rauland 2524 can also be used to back up the schedule to disk. After connecting to the Rauland 2524 from the PC, use **Alt-E** to get to the Event Editing screen. First, one must **Capture data from 2524**: press the **F8** key on the keyboard and the Rauland 2524 will send data to the PC:



Once the data is captured, one must **Save to Disk**, using the **F7** key:

Keep in mind the limitations of DOS filenames when naming the file. A good filename would be the site name and a date: Laker1103 for example. The file will be saved **to the same directory** as the **T2524** PC executable that you run to control the Rauland 2524.

